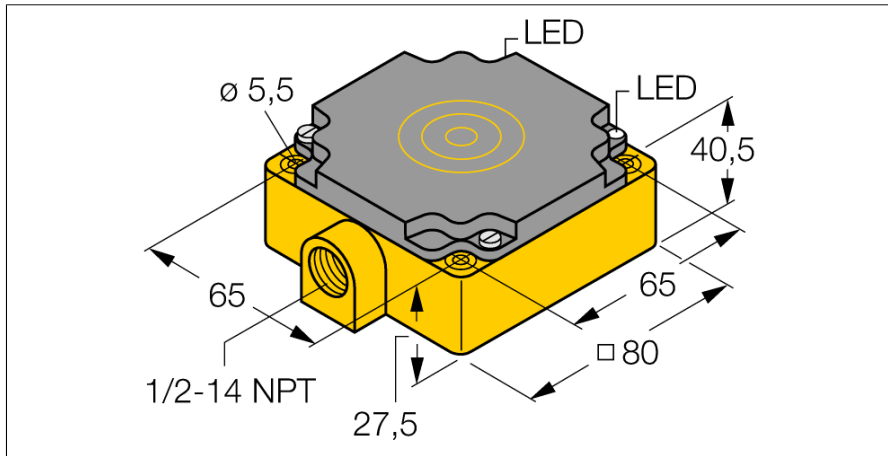


Capacitive sensor NC50-CP80-FZ3X2/S10

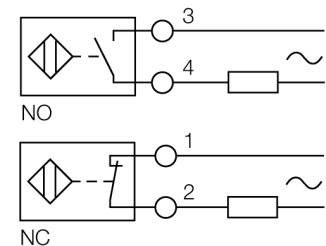
TURCK
works

Industrial
Automation



- Rectangular, height 40.5 mm
- Active face on top
- Plastic, PBT12-GF30-V0
- Fine adjustment via potentiometer
- AC 2-wire, 20...250 VAC
- Programmable connection (NC/NO)
- Terminal chamber

Wiring Diagram



Functional principle

Capacitive proximity switches are designed for non-contact and wear-free detection of electrically conductive as well as non-conductive metal objects.

Type designation	NC50-CP80-FZ3X2/S10
Ident-No.	2310610
Rated switching distance (non-flush)	50 mm
Secured operating distance	≤ (0.72 x Sn) mm
Hysteresis	2...20 %
Temperature drift	type 20 %
Repeat accuracy	≤ 2 % of full scale
Ambient temperature	-25...+70 °C
Operating voltage	20...250VAC
AC rated operational current	≤ 500 mA
Frequency	≥ 50...≤ 60 Hz
No-load current I ₀	≤ 20 mA
Smallest operating current I _m	≥ 5 mA
Residual current	≤ 1.7 mA
Switching frequency	0.07 kHz
Isolation test voltage	≤ 1.5 kV
Output function	2-wire, Connection programmable, 2-wire
Voltage drop at I ₀	≤ 7 V
Design	Rectangular, CP80
Dimensions	80 x 80 x 40.5 mm
Housing material	Plastic, PBT-GF30-V0
Active area material	Plastic, PBT-GF30-V0, yellow
Electrical connection	Terminal chamber
Clamping ability	≤ 2.5 mm ²
Vibration resistance	55 Hz (1 mm)
Shock resistance	30 g (11 ms)
Protection class	IP67
MTTF	1080 years acc. to SN 29500 (Ed. 99) 40 °C
Packaging unit	1
Power-on indication	LED, Green
Switching state	LED, Yellow
Width active area B	80 mm