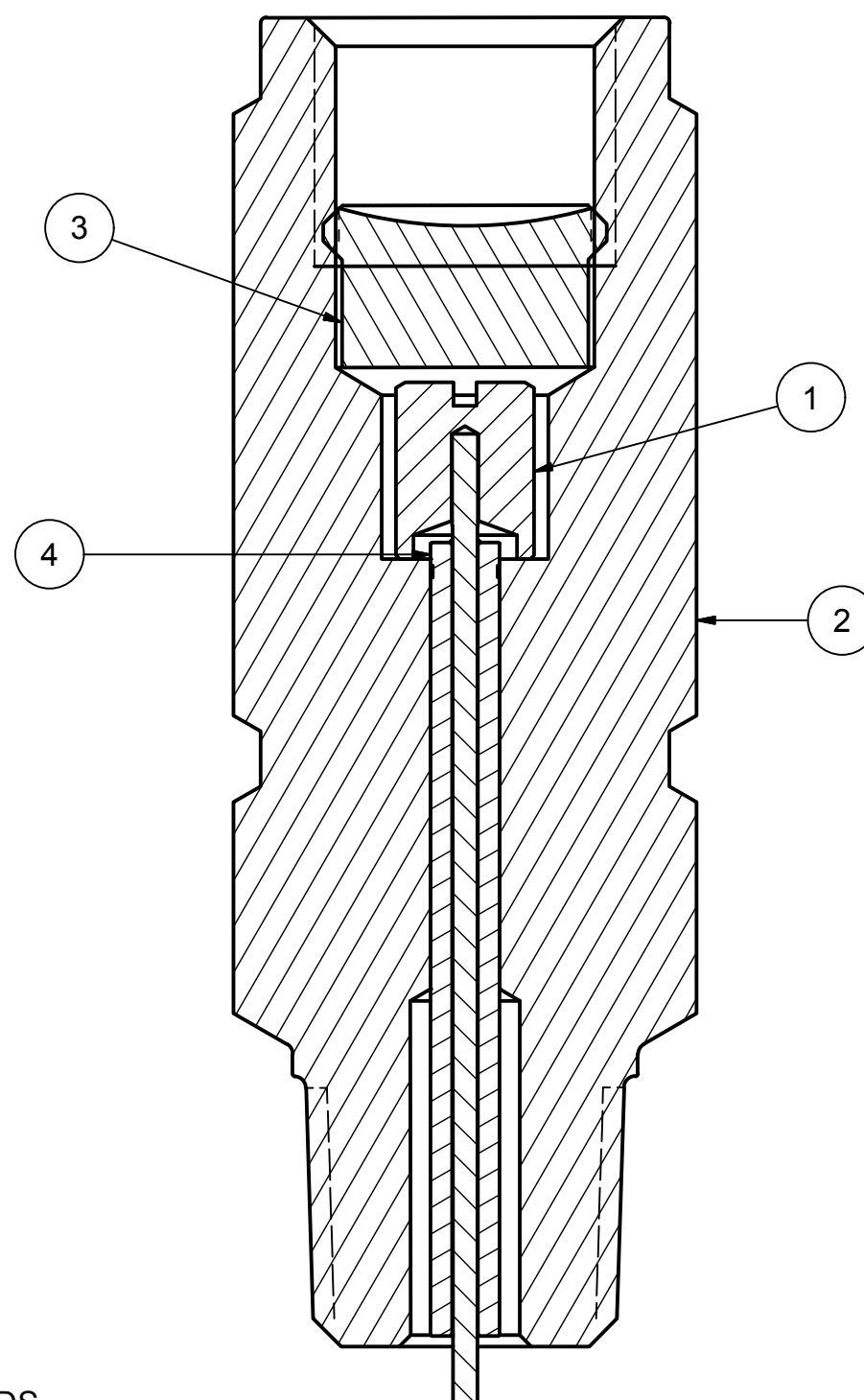
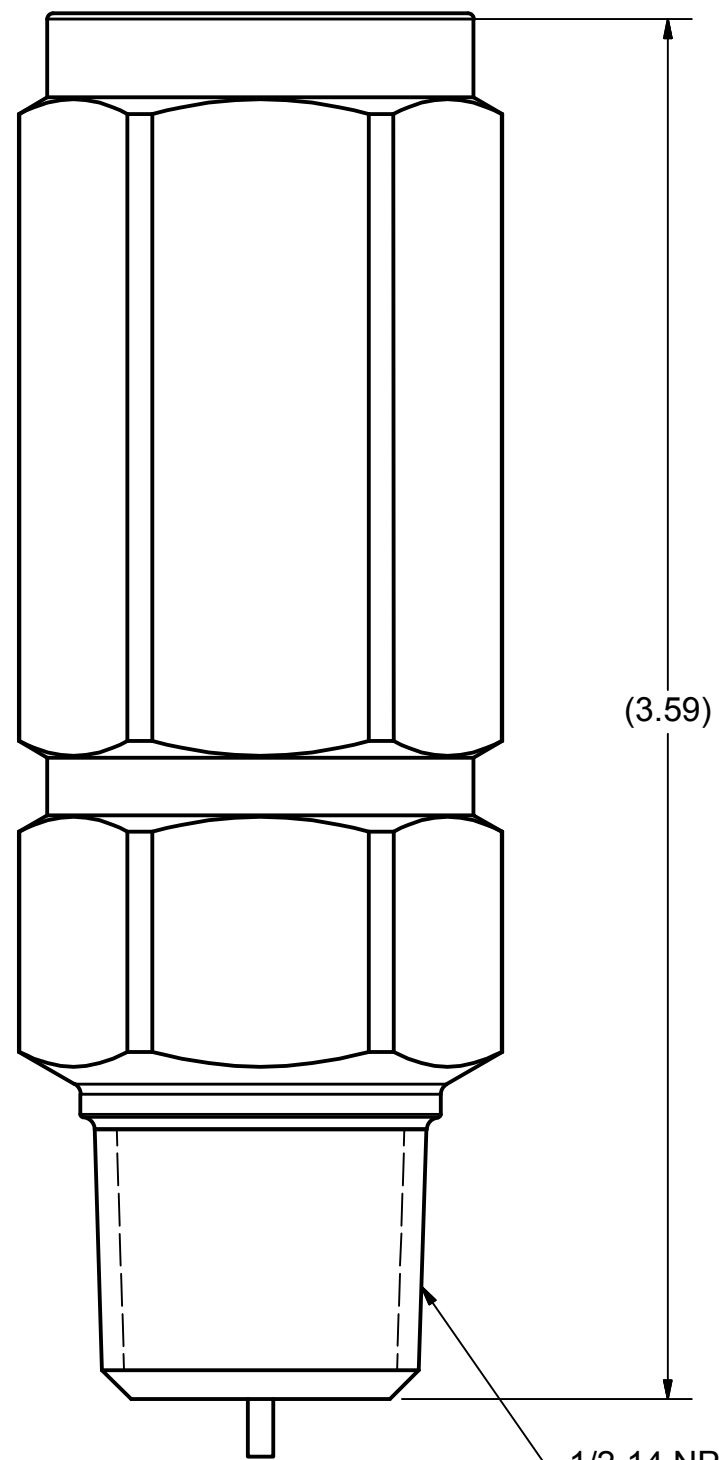
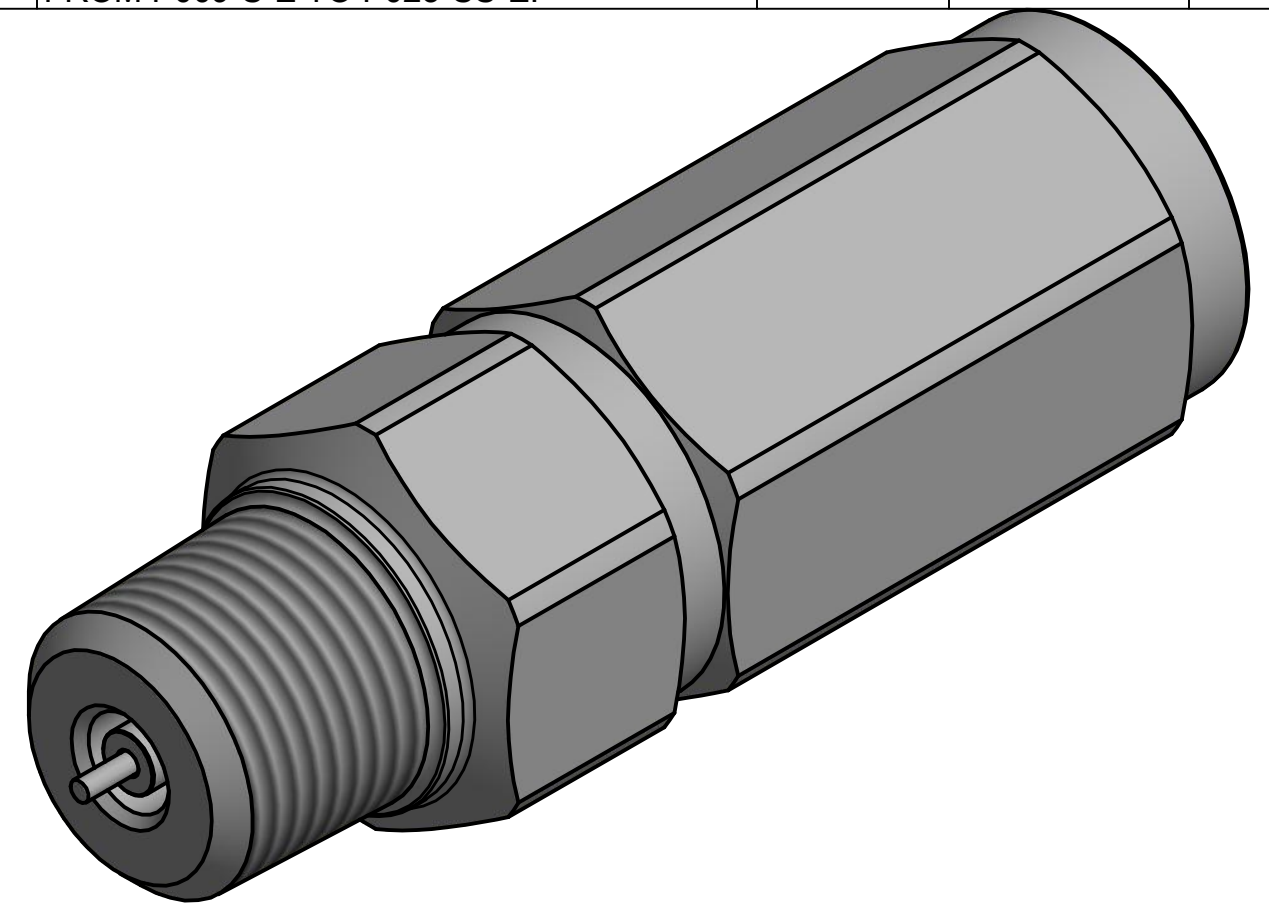
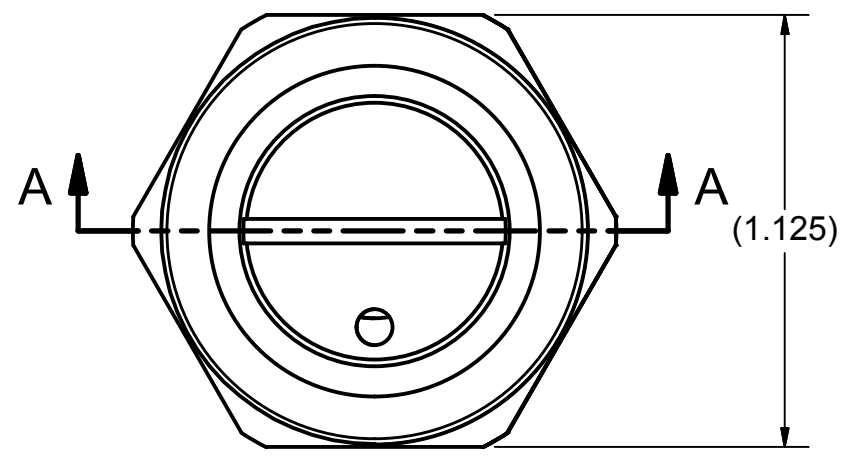


REV		ECN Nr.		DESCRIPTION		DATE	ENGINEER	CHECKED BY
B	10,007	REDRAWN IN CAD, CHG. PISTON STOP FROM P009-S-E TO P023-SS-E.		4/6/16	R. SPAYD	M. PAGE		



THIS RAY PRESSURE SNUBBER IS THE ORIGINAL STANDARD INDUSTRIAL UNIT.

CONSISTENT UNIFORM ACTION IS ASSURED BY THE LONG ACCURATE ORIFICE AND TOLERANCES TO A TEN-THOUSANDTH OF AN INCH. PISTON MOVEMENT CLEARS SEDIMENT OR PIPE SCALE THAT CLOG OTHER DESIGNS.

THE AMOUNT OF SNUBBING CAN BE ADJUSTED BY CHANGING PISTONS. THREE (OF TWELVE AVAILABLE) ARE PROVIDED.

SUITABLE FOR ANY FLUID OR GAS COMPATIBLE WITH THE COMPONENT MATERIALS.

ALSO AVAILABLE IN BRASS OR 303 STAINLESS STEEL

MAXIMUM PRESSURE RATING: 10,000 PSI

1	PT-167-S4	CYLINDER	304 SS	4
1	P023-SS-E	PISTON STOP	316 SS	3
1	P009-SS-B	BODY	316 SS	2
1	PP-SS-XX	PISTON ASSY	316 SS	1
QTY -01	PART NUMBER	DESCRIPTION	NOTE	ITEM

COMMERCIAL RESTRICTIVE LEGEND - ALL ITEMS, ASSEMBLIES, SPECIFICATIONS AND DIMENSIONS INCLUDED ON THIS DRAWING ARE PROPRIETARY TO AND THE PROPERTY OF OPERATING AND MAINTENANCE SPECIALTIES, INC. AND MAY NOT BE USED TO MANUFACTURE OR DUPLICATE THE ITEMS SHOWN HEREON. THE CONTENTS OF THIS DRAWING IN WHOLE, OR IN PART, ARE NOT TO BE USED, REPRODUCED, OR DISCLOSED TO ANY THIRD PARTY WITHOUT OBTAINING THE EXPRESS WRITTEN AUTHORIZATION OF OPERATING AND MAINTENANCE SPECIALTIES INC.

DRAWN BY G. SCHOTT	10/9/1991	OPERATING & MAINTENANCE SPECIALTIES, INC.	OMS INC. 694 West Crowell St Monroe, NC 28112
DESIGNED BY G. SCHOTT	10/9/1991		
APPROVED BY J. SCHOTT	10/9/1991		
DECIMAL ANGLE .XX .XXX ± 1/2° ± .01 ± .005		TITLE MODEL 060 SS RAY PRESSURE SNUBBER	
UNLESS OTHERWISE SPECIFIED: DIMENSIONS ARE IN INCHES.		SIZE C	CAGE CODE 76906
ALL DIMENSIONS AFTER PLATING.		DRAWING NUMBER 060SS	REV B
SCALE 2/1		3-119	SHEET 1 OF 1