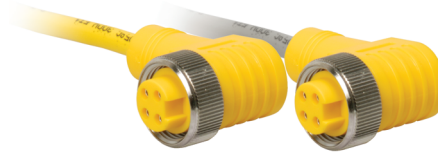
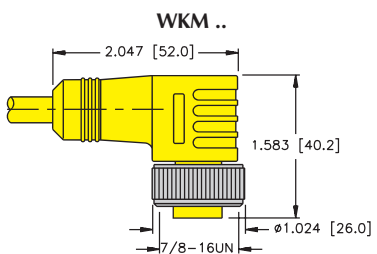
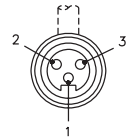
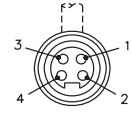


3 and 4-Wire *minifast*® Cordsets, Standard

- Right Angle Female Connectors
- NEMA 1, 3, 4, 6P and IEC IP 67 Protection
- 300 V, 9 A



Housing Style	Part Number	Cable	Features	Pinout
	WKM 311-*M/X0R/S620	AWM Irradiated PVC Yellow, 3x18 AWG 80°C 5.7 mm OD Cable #RF04159-*M [†]	<i>Weld Resistance</i>	1. GN 2. RD 3. RD/WH 
	WKM 40-*M	AWM PVC Yellow 4x18 AWG 105°C 7.3 mm OD Cable #RF50548-*M [†]	<i>flexlife</i> ®	
	WKM 40-*M/S90	AWM PUR Yellow 4x18 AWG 105°C 7.3 mm OD Cable #RF50544-*M [†]	<i>Cut/Abrasion Immune</i>	
	WKM 40-*M/S101	AWM TPE Yellow 4x18 AWG 105°C 7.2 mm OD Cable #RF50968-*M [†]	<i>flexlife-10, High Flex - Over 10 million cycles</i>	
	WKM 40-*M/S529	PUR Yellow 4x20 AWG 105°C 5.7 mm OD Cable #RF50526-*M [†]	<i>Cut/Abrasion Immune, Braided Mechanical Shield</i>	1. BN 2. WH 3. BU 4. BK
	WKM 40-*M/S600	SJOOW CPE Yellow 4x18 AWG 105°C 8.5 mm OD Cable #RF50644-*M [†]	<i>Weld Flash Immune, Flame Immune</i>	
	WKM 40-*M/S824	ITC PLTC PVC Yellow 4x18 AWG 105°C 7.2 mm OD Cable #RF50844-*M [†]	<i>flexlife</i>	

* Length in Meters. Standard cable lengths are 2, 4, 5, 6, 8 and 10 meters. Consult factory for other lengths. Standard coupling nut material is nickel plated brass "WKM .."; "WK .." indicates nylon and "WKV .." indicates 316 stainless steel.
[†] See Section N for *reelfast*® cable information.