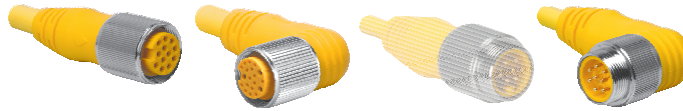


6 and 7-Wire Cordsets, B-Size Heavy Duty

- NEMA 1, 3, 4, 6P
- IEC IP68 Protection
- 600 VAC/DC, 8 A



Connector Style	Female Part Number	Male Part Number	Features	Pinout
<p>RKM ..**</p>	RKM 6B6-*M WKM 6B6-*M	RSM 6B6-*M WSM 6B6-*M	ITC/PLTC PVC Yellow, 6x16 AWG, 105°C, 9.6 mm OD, Cable #RF51030-*M†, flexlife*	<p>Female</p>
	RKM 6B6-*M/S90 WKM 6B6-*M/S90	RSM 6B6-*M/S90 WSM 6B6-*M/S90	AWM TPU Yellow, 6x16 AWG, 90°C, 9.0 mm OD, Cable #RF51137-*M†, Cut/abrasion Immune	
<p>WKM ..**</p>	RKM 6B6-*M/S101 WKM 6B6-*M/S101	RSM 6B6-*M/S101 WSM 6B6-*M/S101	AWM TPE Yellow, 6x16 AWG, 105°C, 8.5 mm OD, Cable #RF51044-*M†, flexlife-20, High flex - over 20 million cycles	<p>Male</p>
	RKM 6B6-*M/S1587 WKM 6B6-*M/S1587	RSM 6B6-*M/S1587 WSM 6B6-*M/S1587	AWM PVC Yellow, 6x16 AWG, 105°C, 9.6 mm OD, Cable #RF51053-*M†, weldlife, Weld flash Immune	
<p>RSM ..**</p>	RKM 76-*M WKM 76-*M	RSM 76-*M WSM 76-*M	ITC/PLTC PVC Yellow, 7x16 AWG, 105°C, 9.6 mm OD, Cable #RF51031-*M†, flexlife	<p>Female</p>
	RKM 76-*M/S90 WKM 76-*M/S90	RSM 76-*M/S90 WSM 76-*M/S90	AWM TPU Yellow, 7x16 AWG, 90°C, 9.0 mm OD, Cable #RF51138-*M†, Cut/abrasion Immune	
<p>WSM ..**</p>	RKM 76-*M/S101 WKM 76-*M/S101	RSM 76-*M/S101 WSM 76-*M/S101	AWM TPE Yellow, 7x18 AWG, 105°C, 9.6 mm OD, Cable #RF51049-*M†, flexlife-20, High flex - over 20 million cycles	<p>Male</p>
	RKM 76-*M/S1587 WKM 76-*M/S1587	RSM 76-*M/S1587 WSM 76-*M/S1587	AWM TPE Yellow, 7x16 AWG, 105°C, 9.6 mm OD, Cable #RF51009-*M† weldlife, Weld flash Immune	

* Length in Meters. Standard cable lengths are 2, 4, 5, 6, 8 and 10 meters. Consult factory for other lengths.

** Standard coupling nut material is nickel plated brass "RKM .."; "RKV .." indicates stainless steel.

† See Section N for reelfast® cable information.