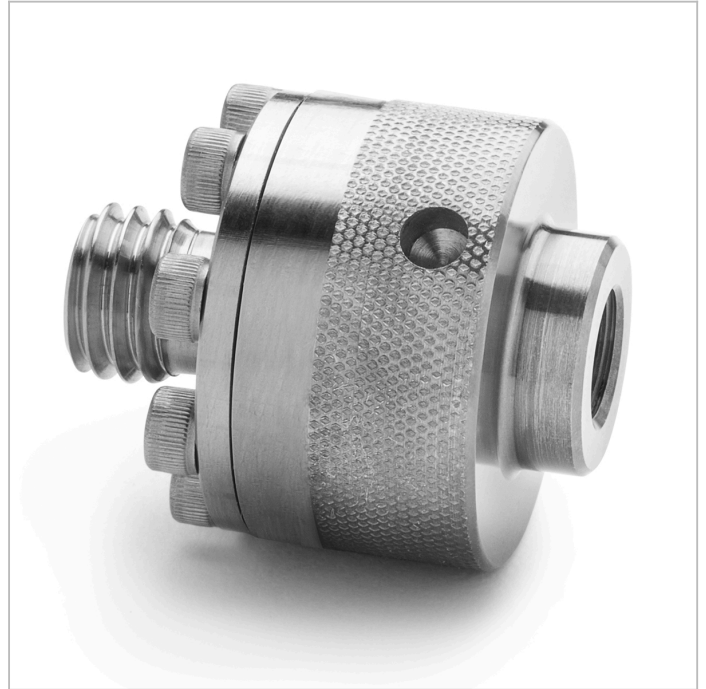


Part No.

XTHA-2TS0-QD

1/4" tube fitting x male Quick-test XT, S.S.

Make a bubble-tight connection to any Swagelok, Parker, Hoke, SSP, Tylok or equivalent tube fitting without a wrench to 15,000 psi



XTHA-2TS0-QD

Specs/Attributes

| | |
|-------------------|--|
| Country of origin | USA |
| Dimensions A | 0.00 In / 0.00 mm |
| Dimensions B | 0.00 In / 0.00 mm |
| Has Check Valve | No |
| Materials | Stainless Steel |
| Max Pressure | 15000 PSI / 1000 bar / 100 MPa |
| Seal Materials | Teflon, Viton |
| Connector End 1 | 1/4" Male Tube Fitting |
| Connector End 2 | Male Quick-test XT |
| Weight | 6.14 oz / 175 grams |
| Dimensions | H: 1.92 in (4.88 cm) x W: 1.41 in (3.58 cm) x D: 1.41 in (3.58 cm) |